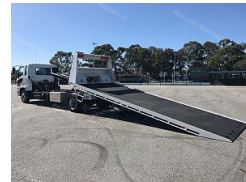


2024 Fuso Fighter 1424 Lwb Auto Tilt Tray

Details

Price: \$254,990 Inc. GST
Dealer Stock #: 02
New / Used: Dealer New



Seller Details

DAIMLER TRUCKS DANDENONG



Name: Daimler Trucks Dandenong
Phone: (03) 8362 3699
Dealer License No: LMCT 10219
State: VIC
Suburb: Dandenong South
Postcode: 3175

Description

CHASSIS AVAILABLE NOW FOR IMMEDIATE BUILD Fuso Fighter 1224 LWB AUTO, with local quality built ATM Tilt Tray is a perfect combination for anyone looking for a Tow Truck. 6 Cylinder Turbo intercooled engine boasting 745Nm of torque and 177Kw of power, couples with the every reliable Alison 5 speed automatic transmission. The truck comes standard with reverse camera and an option to choose between 12ton or 14ton GVM, a light tare weight and 30 000km or 12-month service intervals with an option to take up the popular "Cap Price Servicing plans" Fuso trucks are known for their reliability and durability, making them a great choice for businesses in need of a reliable vehicle. With longer service intervals, it means that the truck is at work more than most others, increasing its productivity and value. The Tilt tray is built by one of our local builders, ATM (Australian Trailer Manufacturers) the tray has 7050mm of usable deck, 5mm hardox floor, 12 000lbs hydraulic winch with a 14mm 25mt cable, quick lash front and rear systems, ATM second car underlift, 2x headboard and 1x 1000mm long chassis mounted toolboxes, work lights and twin mini led bars on head board. At our dealership we make purchasing a Fuso truck hassle-free and can even help with finance needs in house, saving you both time and money. Overall, choosing a Fuso truck is a smart decision, especially with the many features and benefits that this 2024 Fuso Fighter 1424 LWB Auto offers. With its class-leading payload capacity, safety features, and reliability, it's hard to beat. **Please note that due to factors outside of our control, such as change of factory promotions and cost, specifications, availability, and price may differ from the time of advertising. Photos in this listing may not be the exact vehicle and are used only for illustration purposes.**

Product Details

Price	\$254,990
Type	Dealer New
Year	2024
Odometer	48.0 km
Make	Fuso
Model	Fighter 1424 Lwb Auto Tilt Tray
GCM	20000
VIN	TBA
Registration Date	N/A

Further Details

Engine Number	6M60-CAT5
Colour	White
Badge	FUSO
Brakes	Drum
Engine Make	Fuso
Fuel Capacity	200
Fuel Type	Diesel
Gears Forward	4
GVM	11995
Condition	Excellent
Radio	N/A
Stereo	6.1 inch touch screen Digital Radio CD/DVD Player with Bluetooth / I Phone / USB Connectivity
Transmission	Automatic
Air Conditioning	Standard
Drive	4x2

